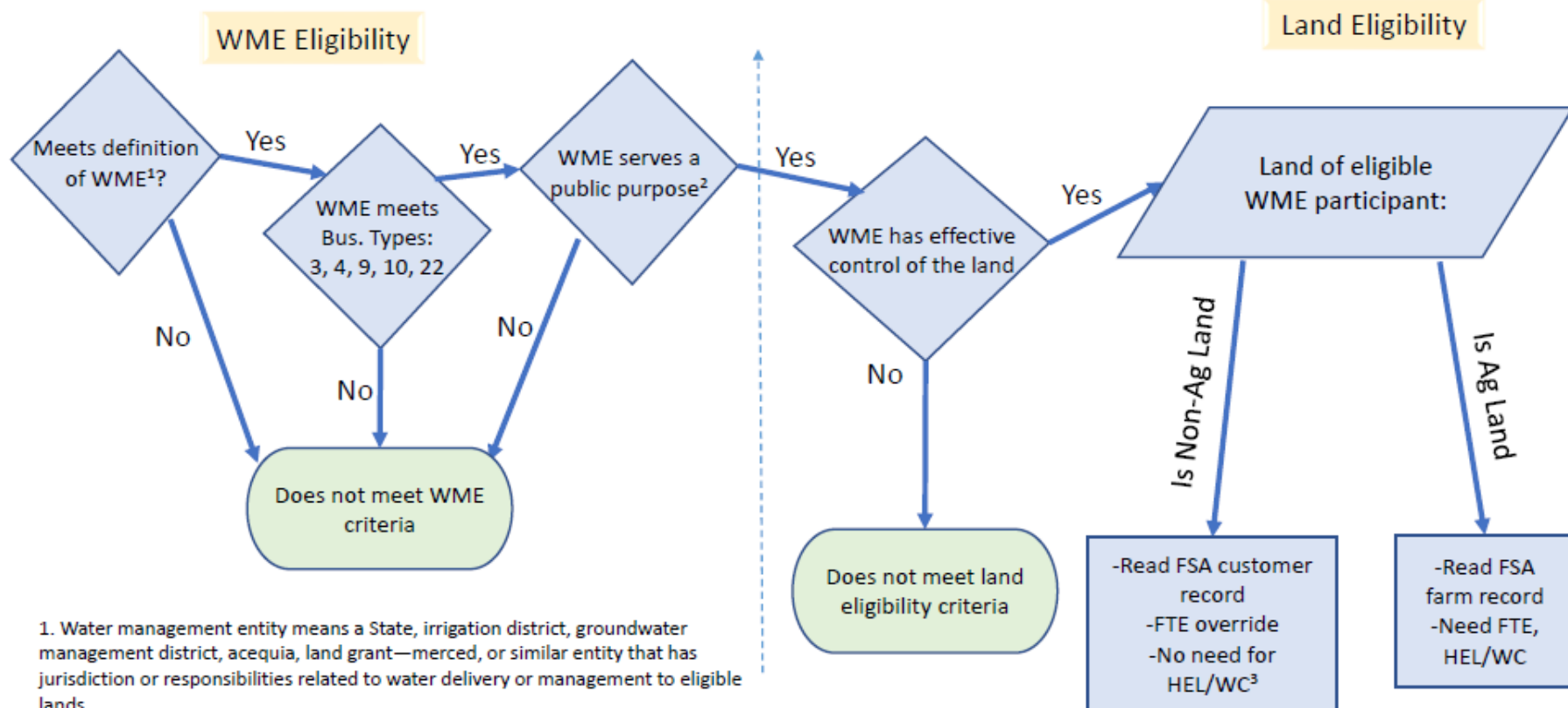


# WME and Eligibility

Eligibility Flow Chart for Water Management Entities



1. Water management entity means a State, irrigation district, groundwater management district, acequia, land grant—merced, or similar entity that has jurisdiction or responsibilities related to water delivery or management to eligible lands.

2. A private or public company that serves a public purpose such as a public utility (i.e., has a public governing board ) and assists private agricultural producers with managing water distribution or conservation systems

3. As this is non-ag land, HEL and wetland compliance not required